

殿夜蛾属 *Pygopteryx* Staudinger

Pygopteryx Staudinger, 1887, Mem. Lep. 3: 230.

Type-species: *Pygopteryx suava* Staudinger.

Prionoxanthia Draudt, 1950, Mitt. munch. ent. Ges. 40: 122.

喙发达，下唇须斜向上伸，额光滑无突起，复眼大，圆形，雄蛾触角锯齿形，有纤毛丛；胸部被毛和鳞片，前、后胸有毛簇；前翅外缘波浪形，有一副室；后翅5脉弱，自中室横脉中部发出。

殿夜蛾 *Pygopteryx suava* Staudinger (图版XXXIV-22)

Pygopteryx suava Staudinger, 1887, Stett. ent. Zeit. 3: 230, pl. 13, fig. 4. (Amur地区)

Prionoxanthia cinnamomina Draudt, 1950, Mitt. munch. ent. Ges. 40: 122.

Pygopteryx suava: Ogata, 1958, in Esaki, Icon. Het. jap. p. 109. —Sugi, 1982, in Inoue, Moths Jap. 1: 763.

翅展33 mm。头部灰红色，触角基节及触角干上缘白色，下唇须第二节外侧紫红色；胸部灰红色，下胸及足灰红色带紫色，跗节有白斑；前翅红褐色带白色，端区深赤褐色，内线与中线白色，内斜，肾纹只现一白色短线，外线白色，微曲内斜，亚端线白色，前半内弯，后半锯齿形，缘毛棕色，锯齿形，凹处的端部白色；后翅暗红色，基部、前缘区及臀角带有灰白色；腹部红褐色。雄蛾抱钩棘形，内突弯钩形（图512）。

分布 黑龙江、河北、山东；日本，俄罗斯。

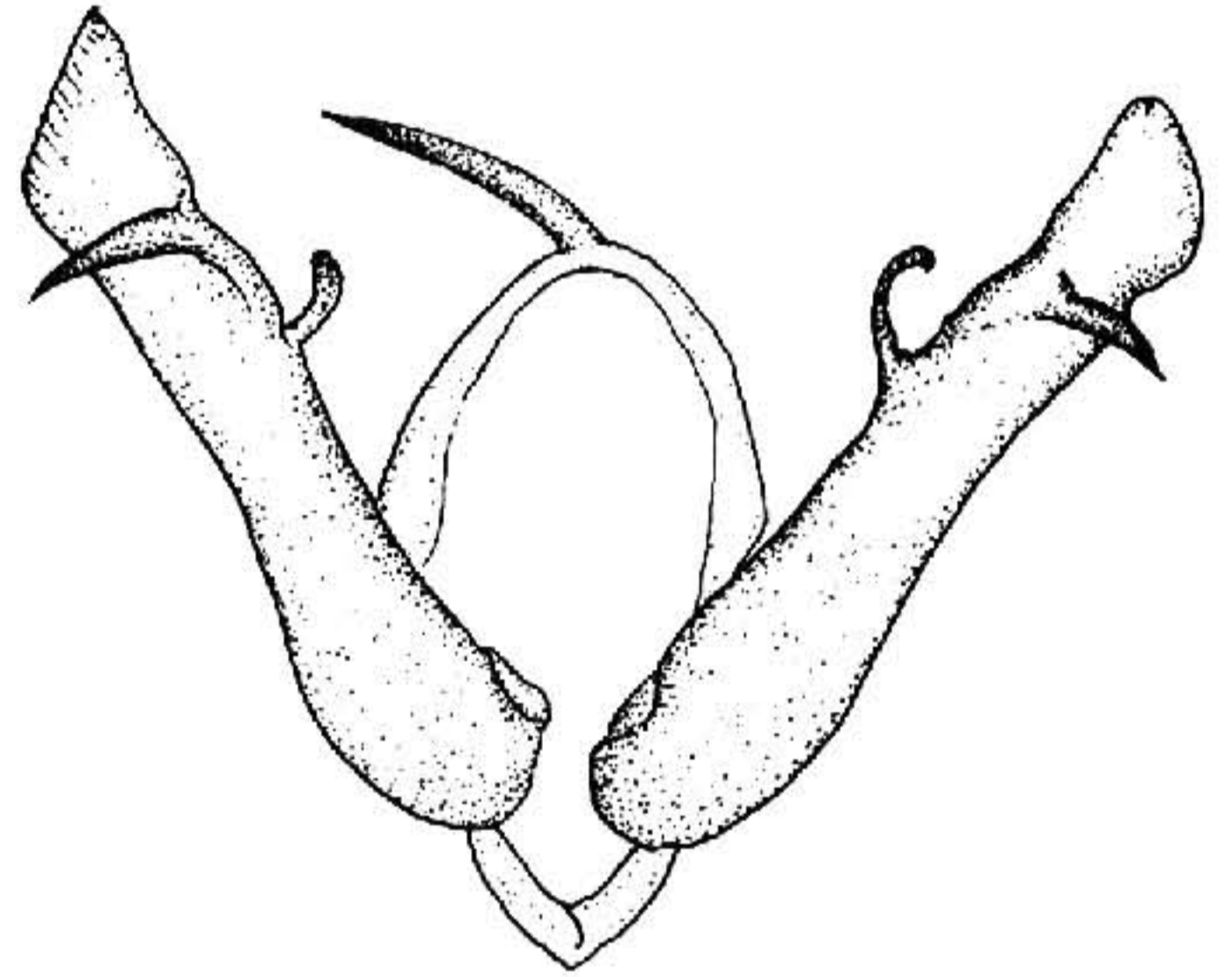


图512 殿夜蛾 *Pygopteryx suava* Staudinger

♂ 外生殖器

灰翅夜蛾属 *Spodoptera* Guenée

Spodoptera Guenée, 1852, in Boisduval et Guenée, Hist. nat. Ins., Noct. 1: 153.

Type-species: *Hadena mauritia* Boisduval.

Laphygma Guenée, 1852, Hist. nat. Ins., Noct. 1: 153. p. 156.

Prodenia Guenée, 1852, Hist. nat. Ins., Noct. 1: 153. p. 159.

Calogramma Guenée, 1852, Hist. nat. Ins., Noct. 1: 153. p. 165.