

中国虻科三新种*

刘维德

(中国科学院上海应用昆虫研究所)

采自华北地区的标本中有三个新种, 现将此三新种描述于后。模式标本保藏于中国科学院上海应用昆虫研究所。

Chrysozona olsufjevi sp. nov. (沃氏麻虻)(图1)

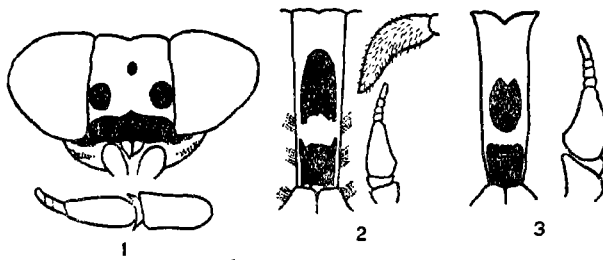


图1. *Chrysozona olsufjevi* sp. nov.

图2. *Tabanus parabactrianus* sp. nov.

图3. *Tabanus subcordiger* sp. nov.

雌虫为8毫米小型种。

头部: 前额高度约等于基部宽度, 两侧大致平行或顶端稍窄于基部; 额板(Callus)宽度约为其高度4倍, 中央无显著突起, 两侧与眼接触; 侧点(Side callus)椭圆形或圆形, 与眼接触但与额板不接触; 中央点(central spot)圆形或心形, 甚小; 触角第1节黄色, 长度为直径2倍, 复以黑毛夹杂少许白毛, 第3节第1环节较第1触角节稍长, 基部1/3—1/2或更多部份黄色, 其余部份及其余环节黑色。颚鬚灰黑色复以黑毛及白毛。颊部(Cheek)上部有黑点, 下部有黑点构成的带。

胸部: 盾片黑色, 完模标本有两条极不显著的灰白纵纹, 但所有副模标本皆不可见; 翅尖带单一, 后缘具数个大白斑; 前足除胫节基部1/2白色外, 其余皆呈黑色, 中足及后足胫节具二白环, 第1跗节基部约1/2白色, 余皆黑色。

腹部: 背板黑色, 每节后缘略呈白色, 完模标本2—6节两侧有极模糊不显著的灰点, 但所有副模皆不可见。

本种与 *Chrysozona chekiangensis* Ouchi 极近似, 在作者对我国 *Chrysozona* 属分类的一篇报告中曾把它记录为 *Chekiangensis*, 但经 H. Г. Олсуфьев 通讯院士仔细复查后认为是一新种。以体形较小, 触角第1节较 *C. chekiangensis* 为短, 以及胸部及腹部纹饰

* 本文于1959年7月27日收到。

的极不显著可与之区别。

为了尊敬 H. Г. Олсуфьев 通訊院士, 作者把这一新种訂名为 *Chrysozona olsufjevi*.

完模♀产于陝西西安(謝榮光、吳元欽采, 1954), 副模 8 ♀, 产地同完模, 采集人及采集時間亦同, 采集时正吸牛血。

Tabanus (Tabanus) subcordiger sp. nov. (类柯虻) (图 3)

雌虫为 14—15 毫米中型灰黑色种。

头部: 前額 (frons) 高度在完模标本为基部 4 倍弱, 副模标本 4—5 倍不等。頂端稍寬于基部; 額板方形, 兩側与眼有少許距离, 这是本种与 *T. cordiger* Mg. 的区别; 上額板 (median callus) 长圓形, 輪廓不清楚, 与額板分离; 額下板 (Subcallus) 复以黃綠色粉被; 脸部多白毛; 触角第 1 节黑色, 具黑毛及白毛, 第 3 节第 1 环节长度約为寬度 1½ 倍, 背緣近基部 1/3 处有鈍突, 完模标本触角第 3 节全部橙色, 惟第一环节基部一半色稍浅, 但所有副模标本及第 3 节第 1 环节基部一半浅棕色, 其余各部份及其余环节黑色; 顎須长度約为直径 2½ 倍, 浅黄色, 复以白毛并夹杂少量黑毛; 眼无橫带。

胸部: 盾片黑色, 复以灰白粉被, 具三条不清楚的灰白縱紋; 小盾片黑色, 复以灰白粉被; 側片具黑毛及白毛; 翅无色, R_4 脉无附枝; 各腿跗节皆呈黑色, 前脛节约 1/2, 中后脛节的大部皆呈黄色。

腹部: 背板黑色, 复以灰色粉被, 每节后緣具窄白带, 2—6 节具輪廓不清楚以至不甚可見的中央三角形灰白点及兩側較清楚的斜方形斑。腹板灰色多毛。

本种应屬 H. Г. Олсуфьев 氏分类系統中 *Tabanus* 亞屬第 2 羣, 在旧北区这一羣虻类中, *T. cordiger* 与之極近似, 但 *cordiger* 額板与眼緊密接触, 而本种則有显著的距离。

完模♀产于山东嶗山(1937, 6), 副模 1 ♀ 产地同完模, 2 ♀ 产于陝西南五台山, 1 ♀ 产于西安(謝榮光、吳元欽采集, 1954—1955), 1 ♀ 产于北京西郊, 从分布看来本种系山区种。

Tabanus (Tabanus) parabactrianus sp. nov. (副菌虻) (图 2)

雌虫为 13—15 毫米中型种。

头部: 前額黃綠色, 基部略窄于頂端, 或兩側大致平行, 高度約为基部寬度 4 倍, 額板黑褐色, 近正方形, 不与眼及額下板接触, 上部兩側微向上突起, 下部有 4 个不显著的鋸齿; 上額板与額板分离, 近长圓形, 下部輪廓不清楚; 額下板黑褐色复黃綠色粉被; 頰复黃綠色粉被, 但上部粉被較少; 触角第 1 节黑褐色被黑毛, 第 3 节第 1 环节紅褐色, 长度为最寬处 1½ 倍, 背緣近中部有鈍突, 其余几个环节黑色; 顎須长度为直径 2½ 倍, 主要复黑毛, 亦有极少数的白毛; 眼具 3 条橫带。

胸部: 盾片黑色具 3 条灰白縱紋; 小盾片黑色有粉被, 側片复白毛及黑毛; 翅无色, R_4 脉无附枝; 足除前中脛节基部大部棕色外, 其余皆呈黑褐色。

腹部: 背板呈黑褐色, 每节后緣具白带, 1—6 节中央具一列三角形灰白点及兩側斜方形斑。

雄 14 毫米。眼小, 眼面区占下部約 1/3, 头頂暗黄色; 額下板复灰白粉被; 顎須卵圓复白毛; 腹部背板 1—3 节, 兩側略帶橙色。其他皆似雌, 但腹部中央三角形点不如雌的清楚。

本种属 Н. Г. Олсуфьев 氏分类系统 *Tabanus* 亚属第 1 羣, 与 *T. bactrianus* Ols. 颇近似, 但 *bactrianus* 前额上宽下窄, 额板上下缘都没有显著的锯齿, 额须不是主要复黑毛都与本新种有区别。

完模♀产于北京官厅附近 (1937, 7), 副模 1♀, 异模 1♂ 产地及采集时间同完模。从产地判断这是一个山区种。

参 考 文 献

- [1] 刘维德: 1958. 中国麻蝇属记述. 动物学报 10 (2): 151—160.
- [2] 刘维德: 1959. 西北虻科初记. 动物学报 11 (2): 158—170.
- [3] Олсуфьев, Н. Г.: 1937. Слепня фауна СССР 17, (2): М—Л.
- [4] Kröber O.: 1925. Lindner 19, Tabanidae. S. 1—146.
- [5] Kröber O.: Katalog der palaearctischen Tabaniden nebst Bestimmungstabellen u. Zusätzen zu einzelnen Arten sowie neubeschreibigen, Act. Inst. Mus. zool. Univ. Atmeniensis. 2: 57—245.
- [6] Yoshio Ouchi: 1940. Notes on some horestlies belong to genus *Haematopota* with new description from China and Manchekou. J. Shanghai Sci. Inst. 3 (4): 253—263.
- [7] Yoshio Ouchi: 1943., Diptera sinica Tabanidae IV. Notes on some Tabanid flies belonging to the subfamilies Tabaninae and Bellardiinae from East China. 上海科研报 13: 505—552.
- [8] Takagi Sakuro: 1941. Tabanidae of North Manchuria, Rep. Inst. Horse-Dis. Inst. Sci. Res. Manchuria. 2: 1—94.

THREE NEW SPECIES OF TABANID FLIES FROM CHINA

LIU WI-TEH

(Institute of Applied Entomology Academia Sinica, Shanghai)

Chrysozona olsufjevi sp. nov.

Female 8 mm.; Head: Width of frons about equal to height, with nearly parallel sides; The width of basal callus about 4 times as its height, touching the eyes; Side callus touching the eyes but not touching the basal callus; Central callus very small; Antenna first segment yellow colour, two times as long as its thick, the basal 1/2—1/3 of first annulation of third segment yellow colour; Palpi covered with black and white hairs; The upper part of cheek with black spots, lower part of cheek with black band. Thorax: Scutum black, with two indistinct greyish stripes; Wing with several white spots at posterior margin. Abdomen: Tergites with indistinct white apical band and indistinct round greyish spots at 2—6 segments.

This species is closely related to *Chrysozona chekiangensis* Ouchi, but the body of this new species is much smaller, and the ornamentation on the scutum and abdominal tergites are indistinct. Holotype ♀ from Si-an of Shensi province; paratypes 8 female from Si-an also. Male unknown.

Tabanus (T.) subcordiger sp. nov.

Female 14—15 mm.; Greyish bluish species. Head: Frons slightly widened above, and 4 1/2 times as high as width at its base. Callus quadrate, not touching the eyes; median callus oval shape, completely separated from callus; First segment of antenna black, with black and white hairs, basal 1/2 of first annulation of third segment orange, with dorsal angle; palpi yellowish, covered with

white and black hairs. The ornamentation of scutum and abdomen in this new species and *Tabanus cordiger* Mg. are exactly alike.

This species is very closely related to *T. cordiger* Mg., but as the callus is well separated from the eyes, it can be used as the distinguishing character between these two species.

Holotype ♀ from Laoshan of Shantung Province, paratypes 1 ♀ from Laoshan also, 2 ♀ from Lan-Wu-Tai-Shan of Shensi Province, 1 ♀ from Si-an of Shensi Province, 1 ♀ from suburb of Peking. Male unknown. According to the above localities, it is a mountain species.

Tabanus (T.) parabactrianus sp. nov.

Female 13–15 mm, Head: Frons about 4 times as high as width at its base, slightly widened above; Basal callus dark brown, quadrate, not touching eyes and subcallus; median callus oval in shape, separated from basal callus; subcallus covered with ashy-gray pollen; antenna first two segments dark brown with black hairs; first annulation of third segment redish brown, with a weak dorsal angle; palpi covered with chiefly black and few white hairs. Eye with three bands. Thorax: Scutum black with three greyish-white stripes; scutellum black with greyish pollen; wing r_4 vein without appendage. Abdomen: Tergit dark brown, each tergites with apical narrow white border, a median row of greyish triangles, and a row of greyish spots on each side of tergites.

Male 14 mm.: areas of small facets cover about 1/3 of eye; vertex yellow; subcallus with greyish white pollen. The side of abdomen tergites I–III slightly tinged with orange colour.

This new species is closely related to *Tabanus (T.) bactrianus* Ols., belonging to group 1 of subgenus *Tabanus* according to the system by Olsufjev.

Holotype: ♀ from Kwanting near Peking, paratype 1 ♀, allotype 1 ♂ from the same locality. Judging from the locality, this appears to be a mountain species.