

8-3. *Phisis parapallida* Jin, sp.nov. (Fig.36,129; Map 10)

Physis [sic] pectinata; Schmeltze & Pöhl,1877:21 (part).

Phisis pallida (nec Walker); Chopard,1929:24 fig.21 (only), p.26 (part)

Ph.sp.n.37 Jin,1987:283.

Etymology: From *para* = next to, and *pallida* the name of the species to which this species is close.

Diagnosis:

Body small size (13-14 mm). Front leg with femoral spurs 5/4 (100%), tibial spurs 6/6 (100%). Middle leg with femoral spurs 4/1 (91%, 9% with 5/1), tibial spurs 6/6 (100%), dorsal sub-basal spur absent (100%).

Male with a small, rectangular epiproct (Fig.36B), showing no variation. Paraprocts wide lobe-like, with a long, anterior ventrally-directed, finger-like process and a small posterior one (Fig.36C). Cerci simply cylindrical, inwardly curved, each having a small, inner basal tooth in all examined specimens. Epiphallus coat-hook-like (Fig.36D), the exact form varying with individuals.

Female epiproct small and unremarkable. Paraprocts hardly visible. Subgenital plate with margin generally with more or less straight, convergent lateral margin, apex truncated (Fig.36E), sometimes with a slight notch. Ovipositor shown as Fig.36F.

Measurements(mm):	Holotype (♂)	Range	Allotype (♀)	Range
Body	14.0	- 12.6	13.0	- 16.0
Pronotum	3.3	- 3.8	3.8	
Tegmen	20.5	- 25.0	24.0,	20.7 - 26.0
Femur	10.0	- 11.0	12.0	- 11.2
Ovipositor			9.5,	9.0 - 9.8

Material examined:

Holotype ♂: 1) Upolu I./ Samoa [printed]/ VII-8-40 [handwritten]. 2) Malololelei/ Road le 3) O.H.Swezey/ collector. 4) 1600- 1800' [handwritten]; BPBM.

Allotype ♀: 1) Afiamalu/ Upolu Samoa [printed]/ VI-12-40 [handwritten]. 2) 2200 feet. 3) O.H.Swezey/ collector [BPBM].

Others:

Paratypes: 1♂: Samoa, Upolu, Tuaefu; 16.ix.1923; Swezey & Wilder; BPBM. **2♀♀:** same locality as allotype; 22.vi-2.vii.1940; Swezey and Zimmerman (at light); BPBM. **3♂♂:** Samoa, Upolu, Malololelei (610 m.); 21.iv-xii.1925; Buxton & Hopkins; BMNH

(1 MNHP). 1♀: Samoa, Upolu, Tiavi (640 m.); 21.vi.1940; E.C.Zimmerman; BPBM.
 2♂♂(1 nymph not paratype): W.Samoa, Asau; 7-8.i.1969; B.Hocking; BPBM.
 1♀: Samoa, Tutuila, Pago Pago; 9.x.1923; Swezey & Wilder; BPBM. 1♀: Samoa,
 Tutuila, Mt.Alaya, E. Ridge (470-500 m., *Metrosideros* beating); 23.ii.1965;
 G.A.Samuelson; BPBM.

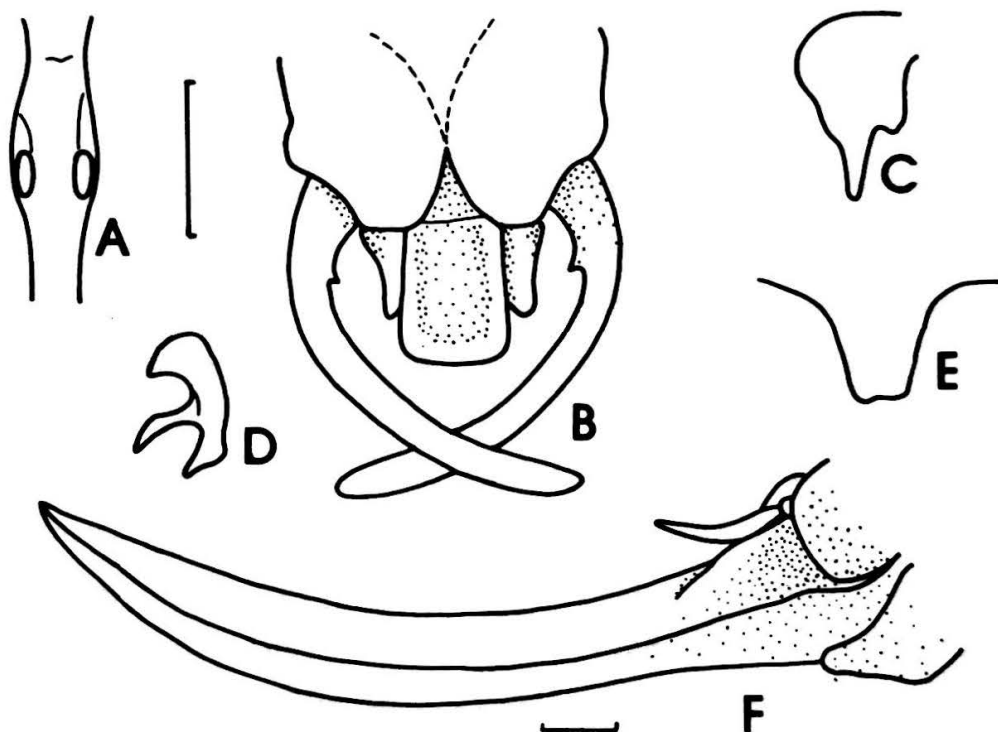


Fig.36. *Phisis parapallida*

A, tympanal organ orifices; B, male abdominal terminalia; C, male paraprocr; D, epiproct; E, female subgenital plate; F, ovipositor.

Remarks:

This species is allied to *P. pallida* (Fig.129), but differs in: 1) body size comparatively smaller; 2) male epiproct smaller rectangular. It is also similar to *P. pallida* in bearing an inner basal tooth on each of male cercus and also in being sympatric with *P. pallida*. It is similar to *P. willemsi* in the rather small narrow rectangular epiproct and the raptorial spur number, front femur 5/4, middle femur 4/1. Here, the character, the basal tooth of the male cerci is considered to have more weight than that of the spur number.