

13a-3. *Paraphisis (P.) noonadanae* Kevan, sp.nov. (Fig.104,133; Map 16)

Ph.sp.n.7 Jin,1987:283.

Etymology: Named after the Danish scientific exploration vessel "Noona Dan", on one of whose expeditions, the material of this species was obtained; ships are "female" hence the feminine genitive termination.

Description:

Body size small (13 mm). Pronotum with yellowish longitudinal stripes in majority of specimens examined (including Holotype and Allotype), only prosulcus distinct, meso- and metasulci indistinct; lateral lobes well demarcated. Thoracic auditory opening minute, connected with spiracle (Fig.104A). Tegmina and hind wings well developed, reaching far beyond ends of hind femora, stridulatory area triangularly expanded, wider than mirror area, mirror and associated area with dark marks, venation as in Fig.104B. Front leg with raptorial spur number apparently unstable in this species, femoral spurs 6/5 in 88% of examined specimens (including Holotype and Allotype), tibial spurs 7/7 in 65%, 8/8 in 27% (including Allotype) and 9/9 in 15% (including Holotype); tympanal organ expanded, orifices large (Fig.104C). Middle leg with trochanteral spine present, femoral spurs 4/2 in 58% (including Holotype & Allotype) and 5/2 in 31%, one example with 6/2 and one with 3/2, tibial spurs 7/6.

Male with hind margin of last tergum concavely emarginate in middle. Epiproct of semicircular or lens-like form (Fig.104D). Paraprocts in form of very small, elongate lobe (Fig.104E). Subgenital plate deeply bifurcated into two elongate lobes, without, or with very minute styli (Fig.104F). Cerci very long, each with an inner curved branch-like lobe near base, beyond which the cercus is bent inward at a right-angle (Fig.104D). Phallic complex with short lateral phallomeres, dorsal phallomeres sac-like and ventral phallomere simple. Epiphallus wishbone-like with basal lobe deeply divided into two (Fig.104G,H).

Female with subgenital plate broad and short, much shorter than the last tergum, posterior margin widely rounded with a shallow excision in middle (Fig.104I). Cerci smaller and finer than those of male, simply cylindrical curved, tapered. Ovipositor curved upward, unserrated apically (Fig.104J).

Measurements(mm):	Holotype (♂)	Range	Allotype (♀)	Range
Body	13.0,	12.6 - 14.0	13.2	- 15.5
Pronotum	3.2,	3.0 - 3.4	3.2	- 3.4
Tegmen	23.5	- 22.0	25.0	
Hind femur	12.0,	11.4 - 13.0	13.0	- 13.4
Ovipositor			7.9	- 8.1

Material examined:

Holotype ♂: 1) New Britain/ Valoka/ 4. July 1962/ Noona Dan Exp. 61-62 [printed]; 2) HOLOTYPE [printed on red]; 3) HOLOTYPE [side ways]/ Paraphysis/ noonadanae n.sp.[in Kevan's hand]/ Det.D.K.McE.Kevan, 1985 [printed]; ZMUC.

Allotype ♀: same as holotype, but "10.vi.1962"; ZMUC.

Paratypes: 1♂: same as holotype, but "7.vii.1962"; ZMUC. 2♂♂,1♀: New Britain, Yalom (1000 m.); 9-23.v.1962; Noona Dan Exp. 61-62; ZMUC. 1♂,3♀♀: Bismarck Is., Mussau I., Talumaisus; 20.i-5.ii.1962; Noona Dan Exp. 61-62; ZMUC. 2♂♂,2♀♀: New Britain, Gazelle Pen., Gaulim (130 m.); 21-28.X.1962; J.Sedlacek; BPBM. 1♂: New Britain, Gazelle Pen., Mt. Sinewit (900 m.); 7-16.xi.1962; J.Sedlacek; BPBM. 1♂,1♀: New Britain, Gazelle Pen., Kerawa (60 m.); 28-31.viii.1955; J.L. Gressitt; LEM. 1♀: New Britain, Gazelle Pen. Baining (350 m.); 6.ix.1955; J.L.Gressitt; BPBM. 1♀: New Britain, Gazelle Pen., Warangoi Val.(100 m.); 24.v.1956; J.L.Gressitt; BPBM. 1♀: New Ireland, Camp Bishop (12 km. up Kait River, 240 m.); 14.vii.1956; E.J.Ford,Jr.; BPBM. 1♀: New Britain, Gazelle Pen., Upper Warangoi (250-600 m.); 28-30.xi.1962; J.Sedlacek; BPBM. 2♂♂: New Guinea, Mamberamo; v.1926; W.Docters v. Leeuwen; MBBJ. 1♂: New Guinea, Ponpondetta Dist., Sangara; 21.iii.1656; E.S.Brown; BMNH. New Guinea, Cyclops Mts., Sabron (280 m.); v-vi.1936; L.E. Cheesman; 1♂; BMNH

Others: New Britain, Gazelle Pen., Upper Warangoi, Illugi; 12-15.xii.1962; J.Sedlacek; 1J; BPBM. New Guinea, Cyclops Mts., Sabron (280 m.); v-vi.1936; L.E. Cheesman; 1♀; BMNH (This female may not be this species, as the subgenital plate quite different from the Allotype).

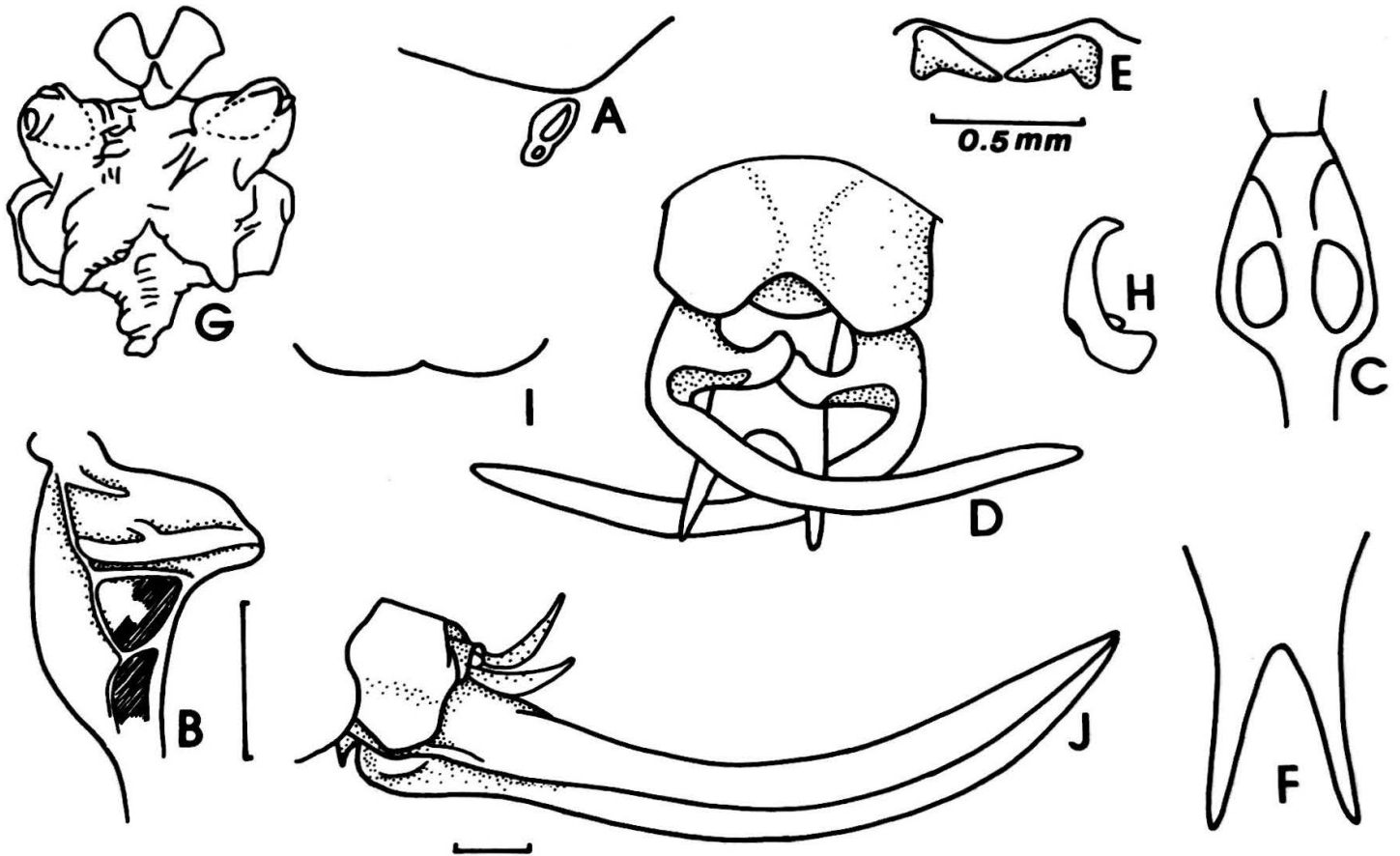


Fig. 104. *Paraphisis (P.) noonadanae*

A, thoracic auditory opening and spiracle; B, venation of male tegminal stridulatory area; C, tympanal organ orifices; D, male abdominal terminalia; E, male paraprocts, F, male subgenital plate; G, phallic complex; H, epiphallus; I, female subgenital plate; J, ovipositor.

Remarks:

This species, together with the following two, is allied to the previous two (Fig.133). It differs from *Paraphisis (P.) lingulata* in: 1) male cerci particularly long, twice as long as the width of the last abdominal tergum; 2) cerci with narrow inner basal lobes.