

8-12. *Phisis hirundocaudata* Jin, sp.nov. (Fig.45,129; Map 11)

Ph.sp.n.19 Jin,1987:283.

Etymology: *hirundo*= a swallow, and *cauda* = tail; referring to the bifurcated male epiproct.

Diagnosis:

Front leg with femoral spurs 5/4, tibial spurs 6/6 (one female with 7/7). Middle leg with femoral spurs 4/1 (one female with 3/1), tibial spurs 6/6, dorsal sub-basal spur present (100%).

Male epiproct wide, posteriorly swallow-tail-like in form, much longer than paraprocts, length more than twice at middle, width, hind margin deeply bifurcated, emargination rounded distally (Fig.45I). Paraprocts broad lobe-like, a pair of large, ventrally-directed finger-like process widely separated, with some individual variation (Fig.45B,C,D). Subgenital plate wide with a more or less straight hind margin (Fig.45E). Cerci simply cylindrical incurved, without inner basal teeth. Epiphallus wishbone-like with short neck (Fig.45G,H), with slight individual variation.

Female subgenital plate triangular, with rounded apex (Fig.45J). Ovipositor curved upwards with apical margin smooth (Fig.45K).

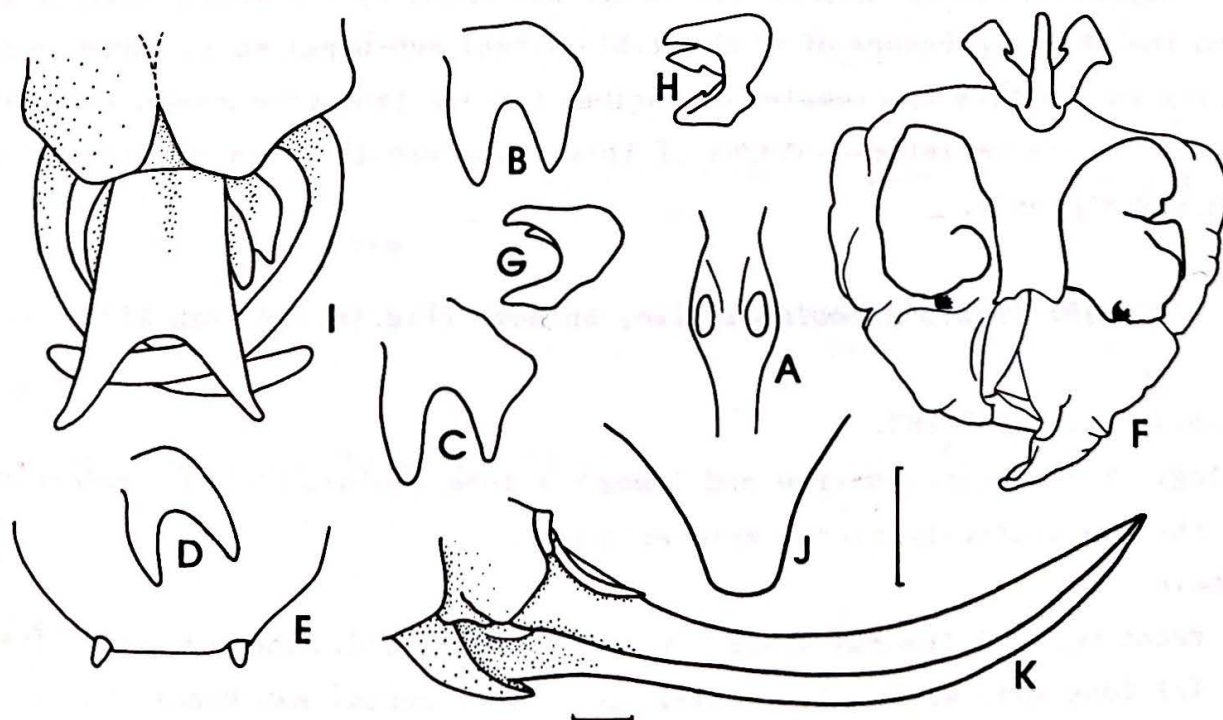


Fig.45. *Phisis hirundocaudata*

A, tympanal organ orifices; B,C,D, male paraprocts; E, male subgenital plate; F, phallic complex; G,H, epiphalli; I, male abdominal terminalia; J, female subgenital plate; K, ovipositor.

Measurements(mm):	Holotype (♂)	Range	Allotype (♀)	Range
Body	15.2	- 12.0	16.0,	15.0 - 17.0
Pronotum	4.0		4.0,	3.5 - 3.8
Tegmen	23.8,	22.0 - 23.2	24.0,	25.0 - 26.2
Hind femur	11.2	- 10.8	11.6	- 13.0
Ovipositor			9.5,	8.0 - 10.0

Material examined:

Holotype ♂, **Allotype** ♀: 1) SOLOMON IS, Toumoa/ Village, 30 m./ 12.IV.1964; 2) P.Shanahan/ Collector/ BISHOP (Light trap); BPBM.

Paratypes: 1♂: Same as holotype, but "3.iv.1964"; BPBM. 1♂, 2♀♀: Solomon Is., Bougainville, Kokure (690 m.); 12-17.vi.1956; E.J.Ford; LEM (1♀ BPBM). 2♀♀: Solomon Is., Bougainville, Kukugai (150 m.); xi-xii.1960; W.W.Brandt; BPBM.

Remarks:

This species together with the rest of the Solomons-group appears to be the sister-group of *Pectinata*-group (Fig.129), it differs in: 1) male paraproct of irregular form with two ventrally-directed process widely separated; 2) middle dorsal sub-basal spur present; 3) endemic to Solomon Islands.

The Solomons group of *Phisis* composing this and the following several species is very similar to the *Pectinata*-group in general morphology. It differs from *P. holdhausi*, which also occurs in the Solomons, by the middle femoral spurs 3/1 and the stable presence of middle tibia dorsal sub-basal spur. There is still a problem to identify the females of various species from this group, because the recognized characteristic features of this group are the form of male epiproct and paraprocts only.