

9b-11. *Neophisis (N.) megaurita* Jin, sp.nov. (Fig.81,131; Map 14)

*Ph. sp.n.66* Jin,1987:283.

**Etymology:** From *megas* = large, and *auris* = ear (*auritus* = eared); referring to the large tympanal orifices.

**Description:**

Body size small (12-14 mm). Prosternal processes long, mesosternal ones short and blunt, metasternal ones very short or obsolete. Thoracic auditory

opening small and connected with thoracic spiracle (Fig.81A). Tegmina and hind wings well developed, reaching a little beyond ends of hind femora, in some specimens stridulatory area almost entirely dark-pigmented (Fig.81B), not so in Holotype. Front leg with femoral spurs 6/4, tibial spurs 8/8; tympanal organ strongly expanded, orifices large (Fig.81C). Middle leg with femoral spurs 5/1, tibial spurs 7/6.

Male with hind margin of last tergum with a rather small excision in middle. Epiproct lens-shaped form (Fig.81D). Paraprocts small lobes, bluntly pointed as in Fig.81E. Subgenital plate with posterior margin shallowly concave with short styli (Fig.81F). Cerci of rather simple cylindrical form with constricted or slightly spatulate apices (Fig.81D). Phallic complex with short lateral phallomeres and sac-like dorsal phallomere, ventral phallomere undivided (Fig.81G). Epiphallus of simple, coat-hook-like form (Fig.81H).

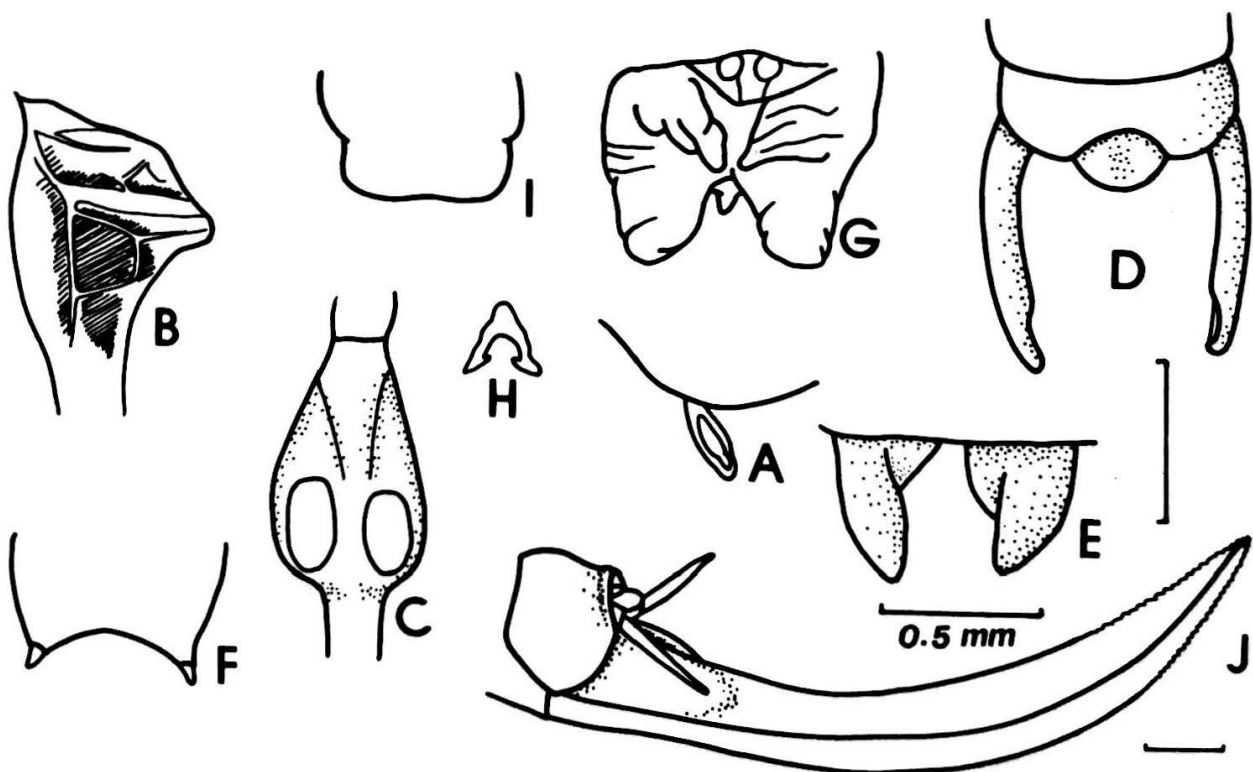


Fig.81. *Neophisis (N.) megauritus*

A, thoracic auditory opening and spiracle; B, venation of male tegminal stridulatory area; C, tympanal organ orifices; D, male abdominal terminalia; E, male paraprocts; F, male subgenital plate; G, phallus; H, epiphallus; I, female subgenital plate; J, ovipositor.

Female subgenital plate with posterior margin slightly arched (Fig.81I). Cerci smaller and finer than those of male, simply cylindrical, tapered.

Ovipositor rather strongly curved upward, with slightly serrated apical margins (Fig.81J).

Measurements(mm):	Holotype (♂)	Range	Allotype (♀)	Range
Body	12.2,	11.2 - 12.5	14.0,	12.0 - 15.0
Pronotum	3.0	- 3.0	3.2	- 3.0
Tegmen	21.0,	19.0 - 24.0	19.0,	18.0 - 25.0
Hind femur	14.4	- 13.0	16.8,	15.8 - 17.0
Ovipositor			7.2,	7.0 - 7.9

**Material examined:**

**Holotype ♂:** 1) NEW GUINEA: NETH./ Waris, S.of/ Hollandia, 450-500 m./ VIII-8-15-1959; 2) T.C.Maa/ Collector [all printed]; BPBM.

**Allotype ♀:** same as holotype; 16-23.viii.1956; BPBM.

**Paratypes** (all from BPBM unless indicated): 1♂,1♀ : New Guinea, Karimui (1080 m.); 8-12,vii.1963; J. Sedlacek. 1♂: New Guinea, Karimui (South of Goroka, 1000 m.; 4.vi.1961; J.L.& M.Gressitt. 1♂: W. New Guinea, Star Mts. Sibil Val. (1245 m.); 18.x-8.xi.1961; S.Quate & L.Quate. 2♂♂,3♀♀: New Guinea, Adelbert Mts, Wanuma (800-1000 m.); 24-27.x.1958; J.L.Gressitt; [1♂,1♀ to LEM]. 2♂♂,8♀♀: New Guinea, Waris. S. of Hollandia (450-500 m.); 8-30.viii.1959; T.C.Maa. 1♀: New Guinea, Star Range (100 m.); 18.vii.1959; CFWC.

**Remarks:**

This species is very close to the last species, *Neophisis (N.) phymacercata* (Fig.131), but differs in: 1) male cerci not incrassated; 2) female subgenital plate lacking rounded lateral swellings.