

# 中国蟋螽亚科二新种 (直翅目: 沙螽科)

刘宪伟, 殷海生

(中国科学院上海植物生理生态研究所 昆虫标本馆, 上海 200025)

摘要: 记述蟋螽亚科 2 新种, 少刺荒栖蟋螽 *Eremus parvospinus* sp. nov. 采自广西, 黑膝疾蟋螽 *Apotrechus nigrigeniculatus* sp. nov. 采自四川。模式标本保存在中国科学院上海植物生理生态研究所昆虫标本馆。

关键词: 直翅目; 沙螽科; 蟋螽亚科; 新种; 中国

中图分类号: Q969.264.1 文献标识码: A 文章编号: 0254-5853(2002)05-0417-02

## Two New Species of Gryllacridinae from China (Orthoptera: Stenopelmatidae)

LIU Xian-wei, YIN Hai-sheng

(Shanghai Institute of Plant Physiology and Ecology, the Chinese Academy of Sciences, Shanghai 200025, China)

**Abstract:** Two new species *Eremus parvospinus* sp. nov. and *Apotrechus nigrigeniculatus* sp. nov. are described in this paper and collected from Guangxi and Sichuan of China respectively. All the type specimens are deposited in Insects Collecting Museum of Shanghai Institute of Plant Physiology and Ecology, the Chinese Academy of Sciences.

### 1. *Eremus parvospinus* sp. nov. (Figs 1-4)

♀ Length. Body 20.0 mm, pronotum 4.0 mm, hind femora 9.5 mm, and ovipositor 5.0 mm. This new species very similar to *Eremus rugosifrons* Brunner-Wattenwyl, 1888, with all characteristics of this distinct genus; both sexes apterous, face (front) with wrinkles, mid tibiae armed with a apical spur above and hind tibiae armed with spines. The new species is distinguished from *E. rugosifrons* by the smaller size and head with distinctly sunken face, hind tibiae with 3 external spines and 2 internal spines.

♂ unknown.

Holotype ♀, Xin'an (Maoershan Mt.), Guangxi, China, 1000 m, 22 to 23-VIII-1992, coll. LIU Xian-wei and YIN Hai-sheng.

### 2. *Apotrechus nigrigeniculatus* sp. nov. (Figs 5-7)

♂ Length. Body 15.0-16.5 mm, pronotum 3.5 mm, hind femora 9.0-10.0 mm. This new species very similar to males of *A. ambulans* (Erichson, 1842) and with all characteristics of this distinct genus; both sexes apterous, hind tibiae unarmed above and male subgenital plate without styli. The new species is distinguished from it by the smaller size, fore and mid legs with blackish knees, paired lobes of male 10<sup>th</sup> abdominal tergite directed downwards, with acute apex. Male subgenital plate transverse, distal part deeply excised, the lobes with two rounded lobes at apex.

♀ unknown.

Holotype ♂, Sichuan (Emei Mt.), China, 1840 m, 16-VIII-1985, coll. JIN Gen-tao; paratype, 1 ♂, same data as in holotype.

**Key words:** Orthoptera; Stenopelmatidae; Gryllacridinae; New species; China

### 1 少刺荒栖蟋螽, 新种 *Eremus parvospinus* sp. nov. (图 1~4)

雌性: 体长 20.0 mm, 前胸背板 4.0 mm, 后足股节 9.5 mm, 产卵瓣 5.0 mm。

体较小, 完全无翅。头部略宽于前胸背板, 头顶圆形, 约为触角第一节宽的 2 倍, 颜面上部明显

凹陷; 复眼肾形, 略突出; 缺单眼斑。前胸背板为不规则的六边形, 前缘微凸, 后缘微内凹, 侧片略低, 横沟或多或少明显。前足基节具刺, 前足胫节腹面具 5 对刺; 中足胫节背面具 1 个内端距, 腹面具 4 个内列刺和 4~5 个外列刺; 后足股节腹面外缘具 3 个齿, 内缘具 5~7 个齿, 后足胫节背面具 2 个外刺和 3 个内刺。下生殖板圆形, 产卵瓣较短,

\* 收稿日期: 2002-03-26; 接受日期: 2002-06-24

其长约为后足股节之半，向上弯曲。

体锈褐色。头部背面具2条暗黑色纵带，颜面具3条较短的黑色纵条纹。前胸背板黄褐色，周缘暗黑色，中央具1条暗黑色纵带。各足胫节基部具1个黑斑，后足胫节刺黑色。

雄性：未知。

正模♀，广西兴安（猫儿山），1000 m，1992—VIII—22~23，刘宪伟和殷海生采。

本新种与皱额荒栖蟋螽 *Eremus rugosifrons* Brunner-Wattenwyl, 1888 较近似，区别在于新种体型明显较小，颜面凹陷和后足胫节刺较少。

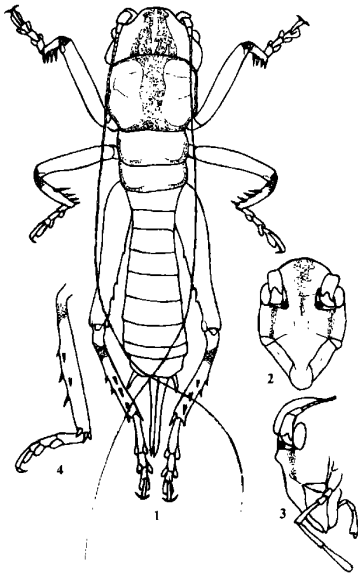


图 1~4 少刺荒栖蟋螽

Figs 1-4 *Eremus parvospinus*, sp. nov.

1. 雌性整体背面观 (Female body, dorsal view); 2. 雌性头部正面观 (Female head, frontal view); 3. 雌性头部侧面观 (Female head, lateral view); 4. 雌性后足胫节侧面观 (Female hind tibiae, lateral view).

## 2 黑膝疾蟋螽，新种 *Apotrechus nigrigeniculatus* sp. nov. (图 5~7)

雄性：体长 15.0~16.5 mm，前胸背板 3.5 mm，后足股节 9.0~10.0 mm。

体略小，完全无翅。头部略宽于前胸背板，头顶圆形，几乎为触角第一节宽的2倍；复眼肾形，

### 参考文献：

- Brunner-Wattenwyl C. 1888. Monographie der Stenopelmatischen und Gryllacriden [J]. *Verh. Zool.-bot. Ges. Wien.*, **38**: 247-349.  
Griffini A. 1914. Le specie orientali del gen. *Neanias* Brunner [J].

略突出；单眼斑不明显。前胸背板为不规则的六边形，前缘微凸，后缘微内凹，侧片略低，横沟略明显。前足基节具刺，前足胫节腹面具5对刺；中足胫节腹面具4对刺；后足股节腹面外缘具4~6个齿，内缘具8~9个齿，后足胫节背面无刺。第10腹节背板端部开裂为2叶，裂叶向下弯曲，端部尖锐；尾须较短，圆锥形；下生殖板横宽，端部裂为2叶，裂叶端部具2个短的圆叶。

体黄褐色。头顶具3个小的暗色斑，后头具1个大的半圆形的暗色板；颜面具2条较短的褐色纵条纹和2个褐色斑。前胸背板黄褐色，周缘暗黑色，中央具1条暗黑色纵带；中胸和后胸背板暗黑色，具不明显的淡色中线。前足和中足膝部、后足胫节基部具黑色。腹部赤褐色。

雌性：未知。

正模♂，四川峨眉山，1840 m，1985—VIII—16，金根桃采；副模1♂，同正模。

本新种与行疾蟋螽 *Apotrechus ambulans* (Erichson, 1842) 较近似，区别在于新种体型明显较小，前、中足膝部具黑色。

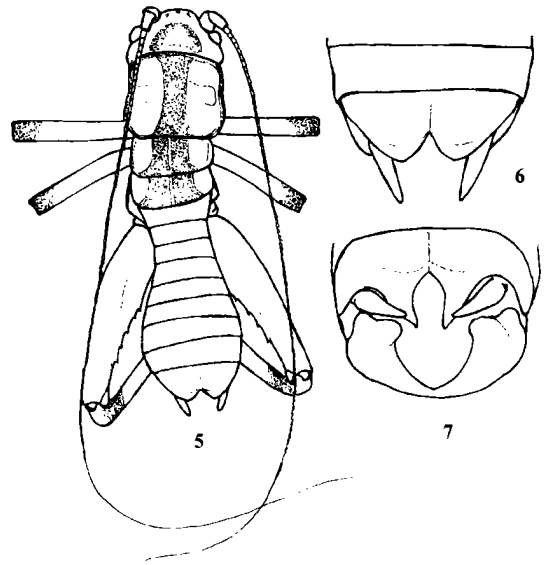


图 5~7 黑膝疾蟋螽

Figs 5-7 *Apotrechus nigrigeniculatus* sp. nov.

5. 雄性整体背面观 (Male body, dorsal view); 6. 雄性腹端背面观 (Male end of abdomen, dorsal view); 7. 雄性腹端后面观 (Male end of abdomen, caudal view).

*Wien. Ent. Zeit.*, **33**: 235-251.

Karry H H. 1937. Orthoptera fam. Gryllacrididae [J]. *Genera Insectorum*, **206**: 1-318.